

40% transmittance poly-crystal modules-36 cells

40%透光多晶组件—36片



结构参数

Mechanical Specifications

Parameter/参数	Value/数值
Cell Type/电池类型	Polycrystalline/多晶硅 (156mm*156mm)
Solar Cells/电池片数量[片]	36(4*9)
Length*Width*Thickness/长*宽*厚[mm]	1658*992*6
Weight/重量[Kg]	23.0
Front Glass/前板玻璃[mm]	2.5 (Low iron semi tempered coated glass/低铁压花半钢化镀膜玻璃)
Interlayer/中间层[mm]	EVA/POE/PVB
Back Glass/背板玻璃[mm]	2.5 (Float semi tempered glass/浮法半钢化玻璃)
Junction Box/接线盒	IP67 Rated, 2 by-pass diodes /2个旁路二极管, 满足IP67安全防护等级
Connector/连接器	Multi-Contact MC-4(or equivalent)/MC-4连接器 (或同类产品)
Transmittance/透光率[%]	40
Maximum Load Capacity/机械负载[Pa]	2400(风压)/5400(雪压)

电学性能

Electrical Characteristics

Parameter/参数		DP36-140	DP36-145	DP36-150
STC : 光谱 AM1.5, 辐照度 1000W/m ² , 电池温度25°C	Maximum Power at STC [Pmax]/标测下最大功率 [W]	140	145	150
	Open Circuit Voltage [Voc]/开路电压 [V]	22.40	22.60	22.80
	Short Circuit Current [Isc]/短路电流 [A]	8.46	8.50	8.60
	Voltage at Maximum Power point [Vm]/最大功率点电压 [V]	17.80	18.10	18.40
	Current at Maximum Power point [Im]/最大功率点电流 [A]	7.87	8.01	8.15
	Power Tolerance /功率偏差 [%]	0~+3%		
NOCT : 光谱 AM1.5, 辐照度 800W/m ² , 环境温度20°C, 风速1m/s	Module Efficiency/转换效率 [%]	8.5	8.8	9.1
	Maximum Power at NOCT [Pmax]/NOCT下最大功率 [W]	104	108	111
	Open Circuit Voltage [Voc]/开路电压 [V]	20.65	20.80	21.05
	Short Circuit Current [Isc]/短路电流 [A]	6.95	6.98	7.05
	Voltage at Maximum Power point [Vm]/最大功率点电压 [V]	16.09	16.36	16.63
	Current at Maximum Power point [Im]/最大功率点电流 [A]	6.47	6.59	6.70
Power Tolerance /功率偏差 [%]	0~+3%			

工作范围

Scope of Work

Parameter/参数	Unit / 单位	Value/数值
Maximum System Voltage /最大系统电压	[V]	1000 DC(IEC)或1500 DC(IEC)
Operating Temperature /工作温度范围	[°C]	-40~85
Nominal Operating Cell Temperature/额定电池工作温度	[°C]	45±3
Maximum rated current/最大保险丝额定电流	[A]	15

温度系数

Temperature Coefficients

Parameter/参数	Unit / 单位	Value/数值
Temperature Coefficient of Pmax/最大功率温度系数	[%/°C]	-0.42
Temperature Coefficient of Voc/开路电压温度系数	[%/°C]	-0.33
Temperature Coefficient of Isc/短路电流温度系数	[%/°C]	0.04

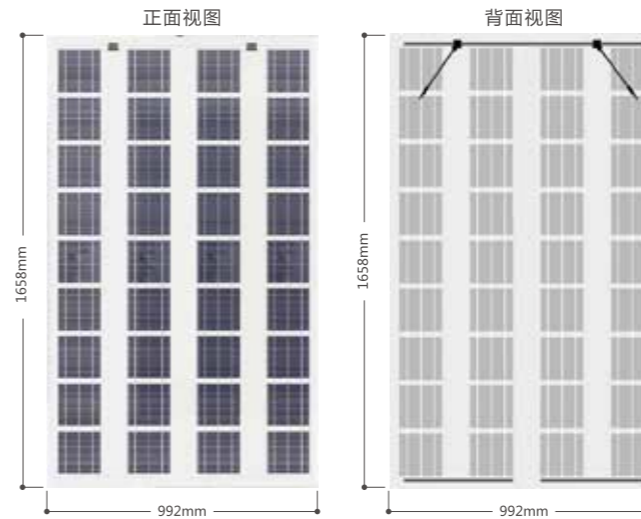
包装信息

Package Configuration

Package Size	Container	20'GP	40'GP	40'HQ
1780×1120×1160mm	pieces for pallet	36	36	36
	pallets for Container	6	13	26
	pieces for Container	216	468	936

结构视图

Module Layout



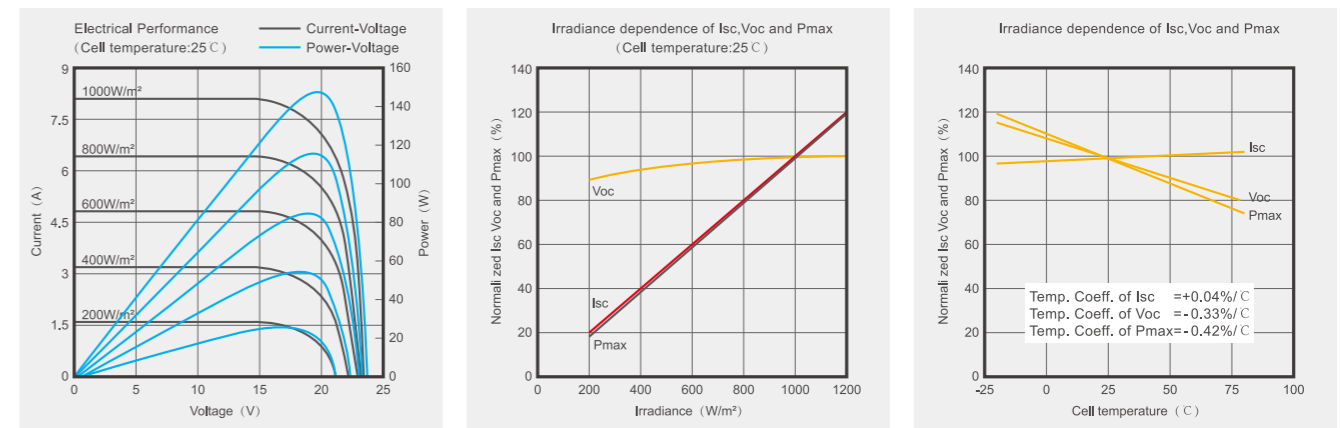
总装图

Components

- Front Glass (2.5mm Low iron semi tempered coated glass)
- Encapsulant (EVA/POE/PVB)
- Cell Type (Mono crystalline 156mm×156mm)
- Encapsulant (EVA/POE/PVB)
- Back Glass (2.5mm Float semi tempered glass)

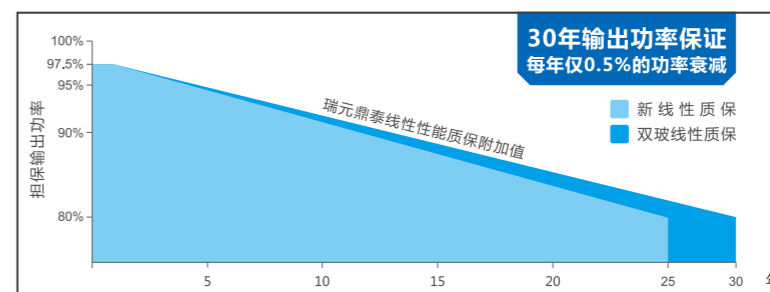
曲线图

Electrical curves



输出功率线性质保

业内领先的线性质保



认证标识

Certification

